

2025 ARCHITECTURE  
LIFESTYLE  
INSPIRATION  
INTERIOR DESIGN

# WALKERS

HOME





meir.®



DARREN  
PALMER

**LUSTRE**  
BRONZE

Discover the Meir X Darren Palmer tapware collection featuring a luxurious Lustre Bronze designer finish with timeless appeal.

**Learn more at Walkers Design Center.**

---

## PRODUCTS LIST

### BASIN MIXER//

Elm Basin Set Par Tap

Colour: Gunmetal

## PROJECT DETAILS

### COOMBES HOUSE//

Location: Torquay

Architect: Lachlan Shepherd

---







# CONTENTS

- 07 Stylist Profile | Bee JanWong
- 08 Buster + Punch The Architect of Attitude
- 12 Collaboration & Synergy | Flinders University
- 16 Feature Renovation | Waratah Wonderland
- 24 Crafted from the heart | Loughlin Furniture
- 30 Stylist Profile | Evie Ramirez
- 32 Feature Renovation | Fluidity and Precision
- 36 Form Function & Finish | Redefine Everyday Living
- 42 A New Age of Glamour | Phoenix
- 46 Lachlan Shepherd | Architect
- 52 Refined by Design | The Denman Project
- 58 Johnson Suisse and Roca Group's Global Impact
- 66 Rich & Luxurious | The Rise of Engineered Flooring
- 72 Bathrooms with Globo
- 75 Stylist Profile | Emma Jones
- 76 Nature Positive | What is Global GreenTag?
- 80 Feature Build | Modern Gable House
- 84 The Quiet Power of Comfort in Learning Spaces
- 86 Stylist Profile | Alicia Flett
- 88 Relaxed Sophistication
- 90 Stylist Profile | Natasha Migliorelli

---

## ABOVE//

Massimo Buster Minale founded Buster + Punch working on his next creation. Discover his inspiring story on page 6.

## ABOVE RIGHT//

Tudorwood Oakitecture Parquetry in Caramel Sundae. More info on page 66.

---

---

## FRONT COVER IMAGE

**brand//** Gessi Kitchen Collection  
**product//** Gessi Habito Sink Mixer 60652  
**finish//** Warm Bronze

---





## EDITOR'S MESSAGE

As we curate this issue—layered with striking homes and innovative design directions—one idea consistently rises to the surface: in a culture of speed and constant refresh, true design invites us to pause and consider what endures.

Trends shape the design landscape. They energise our feeds, influence showrooms, and fuel conversations we love to have. They open doors to experimentation, to pushing boundaries, to reimagining how we live.

Yet years of collaborating with people and their homes has revealed something deeper: design excellence isn't defined by the next new thing. It's about asking sharper questions. How do you move through your space? What experiences do you want it to hold? How will it nurture you, not just now, but in the years ahead?

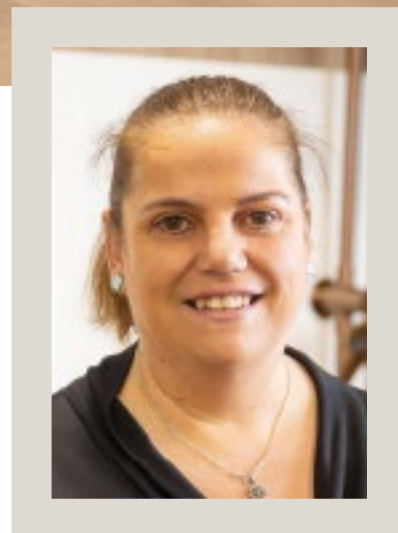
At Walkers Design Centre, we're privileged to partner with homeowners, builders and designers who embrace this perspective. Together, we move past surface aesthetics to craft spaces that are intelligent, individual and enduringly beautiful.

Sustainability sits at the heart of this approach, not as a passing trend but as a principle. From materials selected for their longevity, to craftsmanship built to last, to thoughtful choices that respect both people and planet, we believe good design is inherently responsible.

Trends will cycle, brushed brass one year, matte black the next, but meaningful design always starts with people. It's about the vanity that transforms morning routines, or the tiles that continue to delight long after installation. Styling is important, but lifestyle is paramount.

This issue champions that ethos. Inside, you'll find stories that balance inspiration with intention, celebrating colour, materiality and contemporary expression, always guided by purpose. Because spaces that stand the test of time are never defined by what's fashionable, but by what feels authentic.

Thanks for joining us on the journey.



**TRACEY POCOCK**  
WALKERS DESIGN CENTRE MANAGER



Products // CSR Hebel Powerblock with render.



#### WALKERS HOME

**Editor//** Tracey Pocock

**Art Director//** Rodney Brown

**Design//** Brown Ink Design

**Printer//** Sovereign Press

#### CONTRIBUTORS

Bee Janwong

Evie Ramirez

Natasha Migliorelli

Emma Jones

Alicia Flett

#### CONTRIBUTING PHOTOGRAPHERS

Rodney Brown

Folk Photography

Spacecraft

If you'd like to contribute to  
Walkers Home, please email:  
[wmag@walkers.com.au](mailto:wmag@walkers.com.au)

#### Walkers Design Centre

93 West Fyans St, Newtown VIC 3220

(03) 5222 1255 | [www.walkers.com.au](http://www.walkers.com.au)

# WARM COASTAL

## BATHROOM DESIGN



*Bee Jan Wong*

INTERIOR DESIGNER



### Bee shares her ideal bathroom style

My ideal bathroom style is reflected in this image, this bathroom beautifully captures the essence of modern luxury blended with natural serenity. The soft neutral tones, curved organic lines, and warm wood textures create a calming and sophisticated space. I'm fascinated with the seamless connection between the indoor and outdoor environments, enhanced by the floor-to-ceiling window and sheer curtain, which invites natural light while maintaining privacy. The use of stone textures and clean, minimalist bronze fixtures adds a timeless elegance, while the freestanding tub positioned to overlook nature evokes a spa-like retreat, exactly the kind of sanctuary I envision for everyday living.



A man with tattoos and a black t-shirt stands in a workshop with his arms crossed. The background shows various tools and equipment on shelves.

# Massimo Buster Minale

The Architect  
of Attitude

When Massimo Buster Minale founded Buster + Punch, it wasn't the result of one dramatic epiphany but rather the culmination of passions that had been quietly colliding in his life.



**above//** Buster + Punch sample display kit, they don't do anything by halves. Each item is meticulously presented to the highest of design standards.

**"It was not really one big eureka moment, more of a natural evolution of the things I loved doing," he explains. "By day I was an architect working on big buildings. By night I was in my East London garage making custom motorbikes for friends and eventually for rock stars and fashion designers. One client asked me to make something for their home, a light fitting or a handle, and it clicked. At the time interiors were very neutral and quite beige, so I saw a gap for details that had attitude, that felt special to own and to use. That was the beginning of Buster + Punch."**

The garage became the brand's first workshop and, in many ways, its spiritual home. "The garage gave me the space to experiment," Minale reflects, "but it is London itself that shaped the brand. The city's subcultures, music, fashion, nightlife and art gave me the energy and the edge. The brand still moves with the same rhythm as London. It is always shifting, never standing still, a bit raw but always pushing forward."

His experience with motorcycles continues to define the brand's design philosophy. "Custom bikes taught me that form and function are inseparable. A knurled grip is not just decorative—it shows you how to use it, it gives you confidence in the machine. That thinking carried into interiors. We were the first to use knurled solid metal in hardware and lighting. It is tactile, it is beautiful, and it works."

Fashion, too, proved a critical influence. "Fashion never apologises for being expressive," he says. "I wanted interiors to have that same sense of personality and attitude."

But scaling that vision was not without its trials. "The biggest challenge in those early days was scaling without losing what made us different. We work almost exclusively with solid metal, and to make it beautiful you have to obsess over tolerances, finishing and weight. It was not easy to do at scale. There were times it felt impossible, but we refused to compromise. That determination became part of our DNA. Our customers can feel the difference in every switch and every handle."

If doubt ever crept in, it was quickly drowned out by the thrill of connection. "No, never," he says firmly when asked if he considered walking away. "I loved what I was doing too much. What kept me going was the reaction when people touched one of our pieces for the first time. You can see it in their face—that surprise when something ordinary like a light switch suddenly feels extraordinary. That reaction is addictive."

As Buster + Punch grew from a garage in East London into a global design brand, the challenge became preserving its edge. For Minale, the answer lies in staying restless. "We stay fluid and curious. We do not design for short-term hype. We design things that will still matter in twenty years. Our references rarely come from the design world. They come from fashion, food, music, nightlife and the streets of London. That is what keeps the work fresh and stops it feeling like a product of the design bubble."







---

**opposite right//** Buster + Punch sample display kit for lighting products.

**opposite below//** cabinetry hardware display kit.

**this page//** Forked pendant light and solid metal Linear switches and dimmer, in steel and brass finish, all by Buster + Punch.

---



He is equally clear on what he will not do. "If it feels like we are following, we do not do it. I would rather our work mean everything to someone than nothing to everyone. Trends are short lived but originality lasts. We always start with a blank page and ask if this needs to exist and if it will stir a reaction. If the answer is yes, we pursue it. If it feels like a gimmick, we leave it."

The values, he insists, are non-negotiable. "Solid materials, uncompromising precision and an attitude that is unmistakably Buster + Punch. Every piece has to feel like a future heirloom, something that will last and age and grow more meaningful over time. And as a brand, we do not do neutral. Our work should provoke a reaction. Love it or hate it, but never indifferent."

That sense of permanence also defines the brand's approach to sustainability. "We look at sustainability through longevity. The most responsible thing we can do is make products that do not need to be replaced. Solid metal does not wear out, and if it is designed well it will always have relevance. We have moved to recycled packaging, we are paperless where possible, and we are always refining processes. But the real sustainability is in making things people bond with emotionally, so they keep them, use them and pass them on."

The future for Buster + Punch is about creating entire environments. "We are moving into full spaces, kitchens, bathrooms and bedrooms."

Minale says. "The vision is that you can walk into a room and everything you touch, every detail you see, carries that Buster + Punch DNA."

At the same time, collaborations continue to open new doors. "Collaborations let us step outside our comfort zone. When you put our engineering and metalwork next to someone else's craft, whether that is Staub's cast iron, Travis Barker's

music or a chef's cuisine, you create something new and unexpected. That is when it gets exciting."

Asked about dream partnerships, he shrugs. "Honestly, I am open to anything that makes sense culturally and lets us disrupt. Fashion, tech, film, even gaming. If there is synergy, I am in."

And what about returning to motorcycles or fashion, the worlds where it all began? "Never say never," he smiles. "Motorcycles are in my blood and fashion has always been part of our attitude. We have already dipped back into both with one-off projects, and I would love to push those further. But it would have to feel right—not nostalgia, but something that moves those industries forward the way we did with interiors."

Behind the relentless pace of global expansion, Minale is quick to acknowledge the importance of family. "If you ask my family, they might say that I don't balance very well," he admits. "But family is always my priority and nothing will sway me in that belief. As a founder that's still very much hands-on, I obviously devote a big portion of my life to this brand, but

there will always be space to relax and also develop outside of that framework."

Switching off comes in simple forms. "I listen to music, enjoy a good series, spend time with my family and stay active. Give me somewhere hot for a



holiday and I'm happy. And in terms of fueling creativity, a big city and a few hours to explore is no bad place to start. And London, of course."

Even those quiet moments can spark ideas. "There's a piece coming up called Takeout, which is our first portable piece of B+P lighting. That idea stems from those dusk moments with family and friends when you wish you had just that little extra bit of atmospheric lighting to extend the moments longer into the night after the sun goes down."

And if he ever had a free week, free from deadlines and design? "Easy," he says without hesitation. "In my garden, playing football with my wife and kids."

For Minale, the long game is not about scale but resonance. "In ten years' time, I hope people will say we changed the way they connect with the everyday things around them. That

we made the ordinary things more engaging and charismatic. If people look back and say we gave them joy, attitude and originality in the details of their homes, and that those details lasted and still matter, then we have done our job." ♦





# COLLABORATION & SYNERGY

Flinders University's new Health and Medical Research Building (HMRB) is a state-of-the-art 10-storey facility in Adelaide that brings together market-leading research, education and clinical expertise with community, culture and nature.

Designed by Architectus, this facility seamlessly integrates cutting-edge research laboratories with collaborative workspaces and public areas, creating an environment that inspires innovation and accelerates the translation of research into real-world healthcare solutions.

Completed early 2024, the HMRB is destined to be a catalyst for collaboration, synergy and technological advancement, shaping the future of healthcare in South Australia.

Siniat was charged with the ceiling and framing engineering. The building's unique design meant there were no out-of-the-box solutions, Siniat needed to get creative and they did.

## THE CHALLENGES

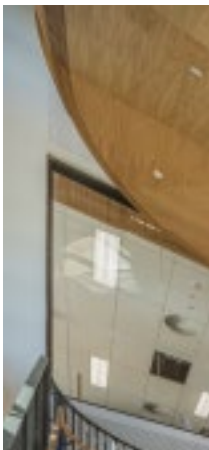
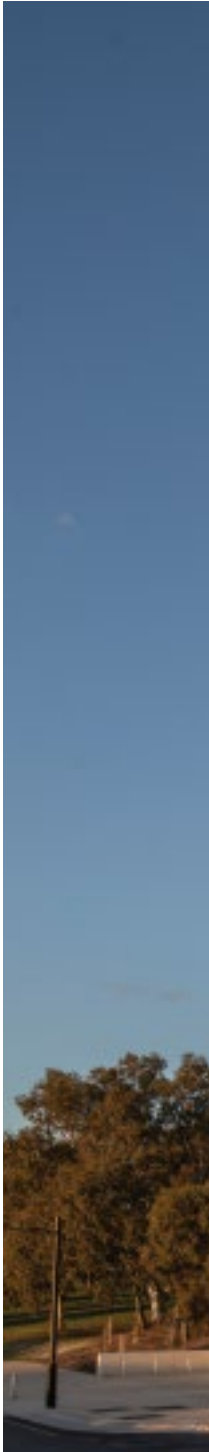
"The laboratory spaces are purposely built to accommodate dedicated and complex functionalities", says Luke Valente, Senior Project Coordinator at Hansen Yuncken,

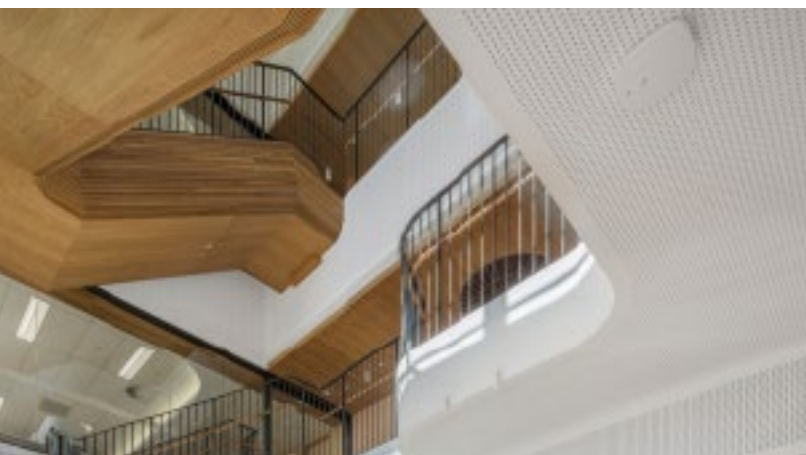
who has been involved with the HMRB's development for over two years. "This bespoke approach, coupled with the extensive building services, created wall and ceiling framing challenges."

The building's intricate design and network of building services, including extensive mechanical ductwork, required innovative solutions to ensure structural integrity and optimal functionality. Acoustic considerations were also paramount, given the need for quiet, focused environments for labs as well as the administrative part of the building. In addition, curved walls – a prominent design feature – further complicated the acoustic requirements.

## THE SOLUTION

Siniat, a global leader in innovative building solutions, was instrumental in addressing these challenges. Their extensive range of products, unparalleled technical expertise









and collaborative ethos proved to be the best suitable fit for the project's unique requirements.

"Siniat's framing solutions and Molyvan's technical assistance was exceptional throughout the project," says Luke. Molyvan Lim, Senior Structural Engineer & Specifications Manager for Siniat, provided invaluable guidance and support throughout the project. "Molyvan always readily available to assist, and Siniat

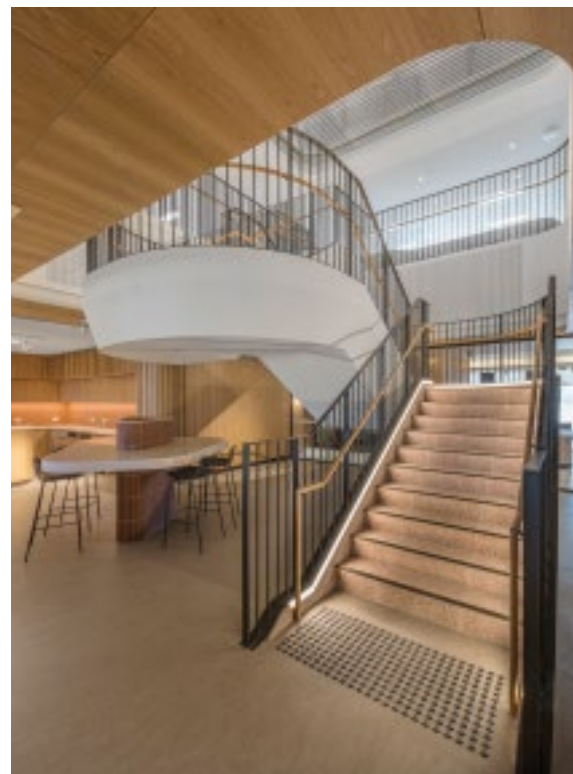
provided innovative framing solutions, particularly bridging techniques, to work around the extensive mechanical ductwork. This mitigated requirement for additional structural steel support."

Luke adds that the project required robust planning, and the project team worked with Siniat to develop more efficient wall and ceiling systems.

"Molyvan engineered everything and was fantastic to work with," says Seth Powell,

Project Manager with GMR Interiors, the ceilings and partitions contractor on the project. "He did regular site visits to make sure we were adhering to Siniat's guidelines and happily provided engineering solutions when needed."

Acoustically, Siniat's Createx perforated plasterboard emerged as a star player. "Createx was specified to achieve sound absorption, meet NRC and open area requirements, and provide the seamless finish



the designer envisioned," explains Molyvan. "It's a specialty acoustic product that combines creative design with CAPT'AIR® clean air technology and superior sound absorption, improving both acoustic comfort and indoor air quality."

Siniat's 6.5mm Curveshield was pivotal in bringing the rounded elements of the design to life. "We successfully used Siniat's Curveshield for the curved parts of the design and achieved a seamless transition between the perforated and curved sections," Luke adds. "GMR's quality in flushing and patching the perforated board was outstanding."

In addition, Siniat provided a suite of other high-performance products, including 13mm Mastashield, 13mm Soundshield and Shaftliner plasterboards. "Plus, the 13 and 16mm Fireshield was used in applications where fire rating was required," adds Alby Kenney, Construction Manager with GMR Interiors. "There were multiple instances where we needed to have a fire-rated partition between rooms."

This comprehensive approach, backed by Siniat's full system warranty, gave the project team confidence in the building's quality and performance. In addition, ADX, the local distributor for Siniat, provided

exceptional service, ensuring timely delivery and availability of products.

"Dealing with one supplier streamlined the process and ensured consistency in specifications," explains Seth.

Collaboration emerges as one of the most pivotal aspects that contributed to this project's success – and both Alby and Luke agree. "It was crucial, especially given the project's complexity," states Alby, and Luke adds that it was the most complex building he's ever been involved in. "It came with its challenges," he says. "But with GMR and Molyvan, nothing was too hard."

Siniat's contributions demonstrate their unwavering commitment to providing expert support and high-performance building solutions that cater to the evolving needs of the construction industry – and even the most complex of projects. By seamlessly integrating design aspirations with functional requirements, the project team has created a space that not only fosters groundbreaking medical research but also prioritises the wellbeing and comfort of its occupants. The building was officially opened in June 2024, and is set to be a beacon of medical research, innovation, and wellbeing in the heart of southern Adelaide. ♦

## PROJECT DETAILS

**Client//** Adelaide University

**Builder//** Hansen Yuncken

**Architect//** Architectus

**Fit Out//** GMR Interiors

**Engineering//** Siniat

**Location//** Bedford Park, Adelaide, SA

**Completion//** 2024

## SINIAT PRODUCTS LIST

### Plasterboard & Acoustics//

Siniat Createx Perforated Plasterboard

Siniat 6.5mm Curveshield

13mm Mastashield.

13mm Soundshield

Shaftliner plasterboards

13 and 16mm Fireshield

## BRAND FEATURED

 **siniat**  
by etex



# Waratah **Wonderland**

Turning a modest three bedroom weatherboard workers cottage into a house with more space for a growing family was the driving incentive for this wonderful renovation in Geelong West. Getting a dining room in the process was an added bonus.

**story//** Charlotte Walker

---

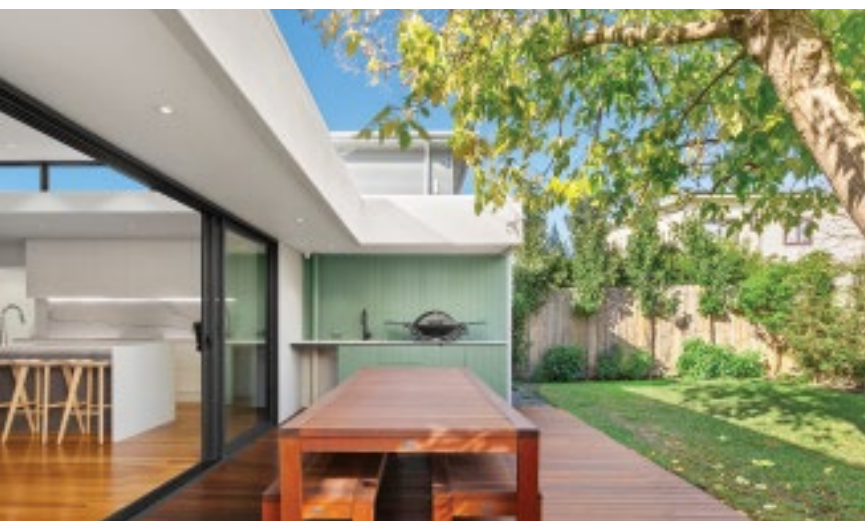
**builder//** Eminent Homes  
**architect//** TKP Design Studio

---









Charlotte and Ryan discuss their house renovation in Geelong West, the reason for the renovation, colour and material choices.

We chose to renovate as it was a small three bedroom weatherboard with no dining room. Ryan and I wanted a bit more space as I was at the time pregnant with our daughter. The previous owner had done a small extension in 1997 however it was needing modernising. We extended the footprint of the main house to include a playroom and open plan kitchen and living area.

There was an existing granny flat at the rear of the property when we purchased it, which is one of the reasons why we liked the property when we first viewed it. We retained the footprint of this granny flat and modernised, so my parents could come and stay for





extended periods from England and not feel like we were all on top of one another.

We loved the exterior timber weatherboard feel of the property at the front, however it was a workers cottage with limited detailing so we kept the new interior plasterwork and cornicing simple.

We planted the garden before the renovation to screen the neighbours, this proved to be a clever decision. By renovation end many of the views from the new windows and glass doors would be of this greenery. To further enhance our newly found views we used a green palette internally on highlight walls to continue the flow of green

from outside to in, the other internal walls were painted in a neutral colour.

The width of the living area was over five metres, so to add texture to the living room wall we used the James Hardie lining board painted green. The bluestone in the kitchen was selected because Ryan's father had used bluestone in his new house and had some left over. We had this cut for use under the kitchen island bench. The colour complimented the veining in the splashback stonework nicely.

The garden had matured by the time we'd finished the renovation so we were very happy with the end result. ♦



---

## PROJECT DETAILS

**Builder//** Eminent Homes

**Architect//** TKP Design Studio

**Interior Designer//** Charlotte Walker

## PRODUCTS LIST

### **Architectural Lining//**

Hardy Groove, James Hardie Groove

**Fireplace//** Classic Fireplaces

### TILES

**Porcelain Tiles//** Fashion Bianco Lappato

### **Landscape Grade Bluestone//**

Fireplace Surround

Kitchen underbench

### OTHER PRODUCTS

**Insulation//** Fletchers Soundbreak R2.5

**External Render//** Walkers Unitex Insulated

Foam Panels & Acrylic Textured Render

**Plaster//** Walkers 10mm + Aria Cornice

### CABINETRY

Breakwater Kitchens

---

## BRANDS FEATURED







---

**builder//** Eminent Homes  
**architect//** TKP Design Studio

---







### Olga Fluted Freestanding Bath

Indulge in the art of bathing with Olga, transform your bathroom into a luxurious retreat with our beautifully sculpted oval bath. Olga is more than just stylish, it delivers a deeply relaxing soak. Its generous depth and smooth curves cradle your body, while the reclined lumbar supports enhance comfort. Perfect for solo relaxation or shared moments, the centre waste ensures balanced seating for two.

### Mintori Freestanding Spa Bath

Surround yourself with tranquility and comfort with the beautiful Mintori Freestanding Spa Bath. Combining luxury with practicality, the oval, ergonomic design conforms to and supports your body, as you stretch out and enjoy a deep, relaxing soak. The removal panels (using a patented magnetic fixing system) allow access to the bath for installation and cleaning.

## PRODUCTS

### LEFT//

Olga Fluted Freestanding Bath  
with integrated overflow

**Sizes:** 1500x750x580mm  
1700x800x580mm

### ABOVE//

Mintori 1790 Freestanding  
Contour Spa Bath

**Jet Options:** 14 Jet or 18 Jet

**Sizes:** 1790x900x(595-630)  
(height adjustable)

**Features:** Spa Remote Control  
C-Lenda™ flush adjustable jets  
& air controls

[decina.com.au](https://decina.com.au)

# Crafted for life and made with heart

photography// Loughlin Furniture story// Tracey Pocock



We recently sat down with Rob and Jess Loughlin the quietly passionate pair behind one of Australia's most beautiful solid timber vanity brands. Over coffee and conversation, they shared the story of how a love of craftsmanship turned into a business rooted in timeless design, local materials, and a whole lot of heart. What follows is a glimpse into their world, where luxury meets honesty, and every piece is truly made to last.


Rob and Jess first launched their business in 2009, when they were just 26 and 22. Young, ambitious and full of vision, they took the leap, blending Rob's hands-on experience in timberwork with Jess's sharp design sensibility. It wasn't born in a boardroom or drafted on a whiteboard, but out of a shared love of craftsmanship and a desire to do things differently.

So now their buzzing workshop is filled with the warm scent of timber, laughter, and the hum of steady craftsmanship, as Rob and Jess are creating more than just bathroom furniture, they're building a legacy of quality, connection, and care.

Rob's journey started years ago, selling handcrafted timber pieces at the iconic Paddington Markets in Sydney. "I've always worked with solid timber," he says. "Seeing how much people appreciated honest, handmade craftsmanship really stuck with me. The idea of creating custom vanities that were both functional and beautiful just evolved naturally from there."

Rob and Jess Loughlin // **Loughlin Furniture**





“ Seeing how much people appreciated honest, handmade craftsmanship really stuck with me. The idea of creating custom vanities that were both functional and beautiful just evolved naturally from there. ”





Jess, with a discerning eye and an unwavering commitment to design integrity, saw a clear gap in the market. “So much bathroom furniture is mass-produced or imported — and most of it just isn’t built to last,” she says. “We knew there was a space for something more personal, more enduring. Vanities that felt like real furniture. Solid timber pieces that age with you, not fall apart after two years.”

Together, Rob and Jess have built a brand that is quietly redefining luxury in bathroom design. Their style is refined and grounded, modern, but never sterile. “Our vanities blend organic shapes with clean lines and solid timber,” Jess explains. “They’re luxurious in their materials and construction, but still approachable.”

Sourcing as many quality materials locally and building a team who genuinely care about what we do was pivotal in the foundation of Loughlin Furniture. “Sharing ideas with our team of skilled and passionate people has 100% added to our overall success” says Jess.

One of the biggest turning points? When local Design Duo Kyal and Kara (The Block 2014 contestants and now friends of Rob and Jess) came to them for a high end residential reno they were undertaking at the time and spoke about beautiful timber bathroom furniture, they knew this was the start of something!

They took a bold step early: investing in their own workshop and bringing all production in-house. “Being hands-on from

“We’re not chasing trends,” Rob says. “We start with timber, it’s inherently timeless. From there, we design in a way that complements the home, not just the moment. That’s why we say everything is Crafted for Life.”

For them, luxury is all about the detail — the feel of smooth joinery, the weight of the timber, the effortless glide of a drawer. Functionality isn’t just a feature — it’s a promise. “It needs to work hard every day and still look good ten or twenty years from now,” says Rob.

Each piece is imagined in-house, with Rob leading design and prototyping, a tight-knit passionate team brings every detail to life. Collaboration is at the core, especially with designers and builders who understand the value of tailored craftsmanship. Each design is filled with depth and heart.

start to finish was the only way we could ensure the level of quality we believed in,” Rob says.

Ask Rob about materials and his eyes light up. “American Oak and Blackbutt, they’re two of our favourites. They age beautifully and carry so much character,” he says. Their finishes are kept natural, allowing the timber’s unique grain and tone to speak for itself. Each timber tells a story, and all vanities are made to accentuate and enhance its grain.

Jess adds, “No two homes are the same — and that’s the beauty of it. We design for real spaces and real people.





Whether it's a coastal home or something more minimalist and modern, we adapt to complement the space. Customisation isn't a service, it's our standard."

Sustainability has always been part of their DNA. "We've never chased fast production or disposable design," Jess explains. "We use FSC-certified timbers, and we're proudly Australian-made. That means shorter supply chains, less waste, and more accountability."

Innovation is layered into their work in subtle but meaningful ways, from their modular construction systems to joinery methods that minimise hardware and let the timber take centre stage.

And while running a business hasn't been without its challenges, especially juggling it alongside family life, Rob and Jess have found a rhythm that works for them. "Like everyone, the struggles of business and family life come and go in ebbs and flows," Jess shares. "We try to operate in a 'one day at a time' frame of mind."

---

**top left//** Hampton Keys Vanity  
**above top //** Hampton Aged Oak Vanity

---





When they're not in the workshop or working with clients, they're likely hitting the road in their caravan, exploring the coastlines of Australia. "We love caravanning along the many coastlines of Australia, including your beautiful one there in VIC," Jess says. "Rob and our son Ashley are both keen surfers, so we're often chasing the waves."

Their early success was built the traditional way — through genuine word of mouth. And it's easy to understand why after spending time with Rob and Jess. They're humble, grounded, and wholeheartedly passionate about what they do.

"We built strong relationships with builders and designers who aligned with our values," Jess explains. "For us, it's always been about people first, products second."

Today, social media plays a big role in sharing their story, especially Instagram. "It's not just about polished images," Jess adds. "We show our team, our process, the timber in its raw form, there's a real heart behind what we do."

Their decision to partner with Walkers was a natural extension and a collaboration built on shared values. "Walkers care deeply about quality and Australian design," Jess says. "It allowed us to expand our reach without compromising what makes our vanities special."

**Jess's advice to other creatives? "Know your values, and stick to them. That's what people connect with. If your product is meaningful and your process is honest, your audience will find you."**

Reflecting on their journey, Rob says, "If I could do anything differently, it would be trusting our instincts earlier. Saying no to things that didn't align was hard at first, but it helped us stay true."

At the end of the day, Rob and Jess aren't chasing scale or trends, they're building something far more enduring: thoughtful craftsmanship, made with integrity, to stand the test of time. ♦

**left//** Hampton Aged Oak Vanity  
**above right //** Custom Material Selection



## JUST THE FACTS

<b>Business Est.</b>	2009
<b>Business Owners:</b>	Rob and Jess Loughlin
<b>Location:</b>	Berkeley Vale NSW
<b>Timbers:</b>	Blackbutt Spotted Gum Tasmanian Oak American Oak Natural American Oak Light American Oak Aged American Walnut
<b>Website:</b>	<a href="http://loughlinfurniture.com.au">loughlinfurniture.com.au</a>

Timber samples and a small collection of Loughlin Furniture vanity units can be viewed at Walkers Design Centre in Geelong.

Loughlin  
Furniture

# MEDITERRANEAN

## KITCHEN DESIGN



*Evie Ramirez*

INTERIOR DESIGNER



### Evie shares her ideal kitchen style

This image beautifully captures the essence of Mediterranean style, which is why I've chosen it as my inspiration. The design evokes a warm, relaxed and earthy atmosphere, rooted in natural materials and organic textures. White/neutral subway tiles on the island and square tiles on the wall splashback transport you to a soft modern Mediterranean mixed with sun drenched coastal style. The soft, neutral palette paired with light oak cabinetry, floor and subtle curves reflects the simplicity and charm of traditional Mediterranean interiors.





# GESSI<sup>®</sup>

## KITCHEN COLLECTION

Discover the artistry of Gessi, where Italian sophistication meets innovation. Gessi creations elevate interiors with striking presence and enduring performance.

Gessi is committed to sustainability, expressing a strong environmental, economic, organisational, cultural and social responsibility.



Oliveri and Gessi are set to transform kitchen spaces into true expressions of luxury and sophistication.

Explore the Gessi Kitchen Collection today.

*Oliveri*<sup>®</sup>

[oliveri.com.au](http://oliveri.com.au)



# Fluidity and Precision in equal measure.

**architect//** Taouk Architects  
**builder//** Procon Building Group

This rendered home's graceful curved walls flow effortlessly, softening the architecture while guiding the eye from one space to the next. Organic shapes are perfectly complemented by vertical lined sections. Together, the smooth render and crisp vertical detailing create a striking balance, a home that feels sculptural yet refined, contemporary yet timeless.













# This was not just a renovation, it was a reinvention.

Taouk Architects vision for this project was to completely transform a dated 1970s brick dwelling into a contemporary, light-filled family home that feels entirely new while still rooted in its Northcote context.

Rather than approaching the project as a simple update, we undertook an extensive renovation designed to redefine the original building's identity. The intention from the outset was to move away from the heavy, compartmentalised feel of the existing home and deliver a clean, modern aesthetic that balances bold contemporary form with warmth and texture.

The architectural language draws on a palette of crisp whites, natural materials, and warmer tones that speak to Northcote's eclectic character... urban yet organic, sophisticated yet grounded. The design prioritises visual clarity and flow, with open, connected spaces and generous glazing to harness natural light and create strong links to the outdoors.

Key elements of the design include a reconfigured layout to support modern living, clean-lined forms that read as a new architectural composition, and carefully layered finishes that soften the geometry and add warmth. The final result is a striking yet welcoming home that honours the original structure through its bones but expresses a completely fresh and current identity. ♦

---

**opposite top //** Stolit Milano looking amazing on the curved rangehood.

**right//** Stolit Milano was used internally, the subtle texture can be appreciated with this lighting.

**opposite bottom//** Base render Stoarmat Classic was then finished with Stolit Milano and Stolit Signature Rough 10.

---

---

## PROJECT DETAILS

**Builder//** Procon Building Group ( Con Maltzis)

**Architect//** Taouk Architects (Youseph Taouk)

## PRODUCTS LIST

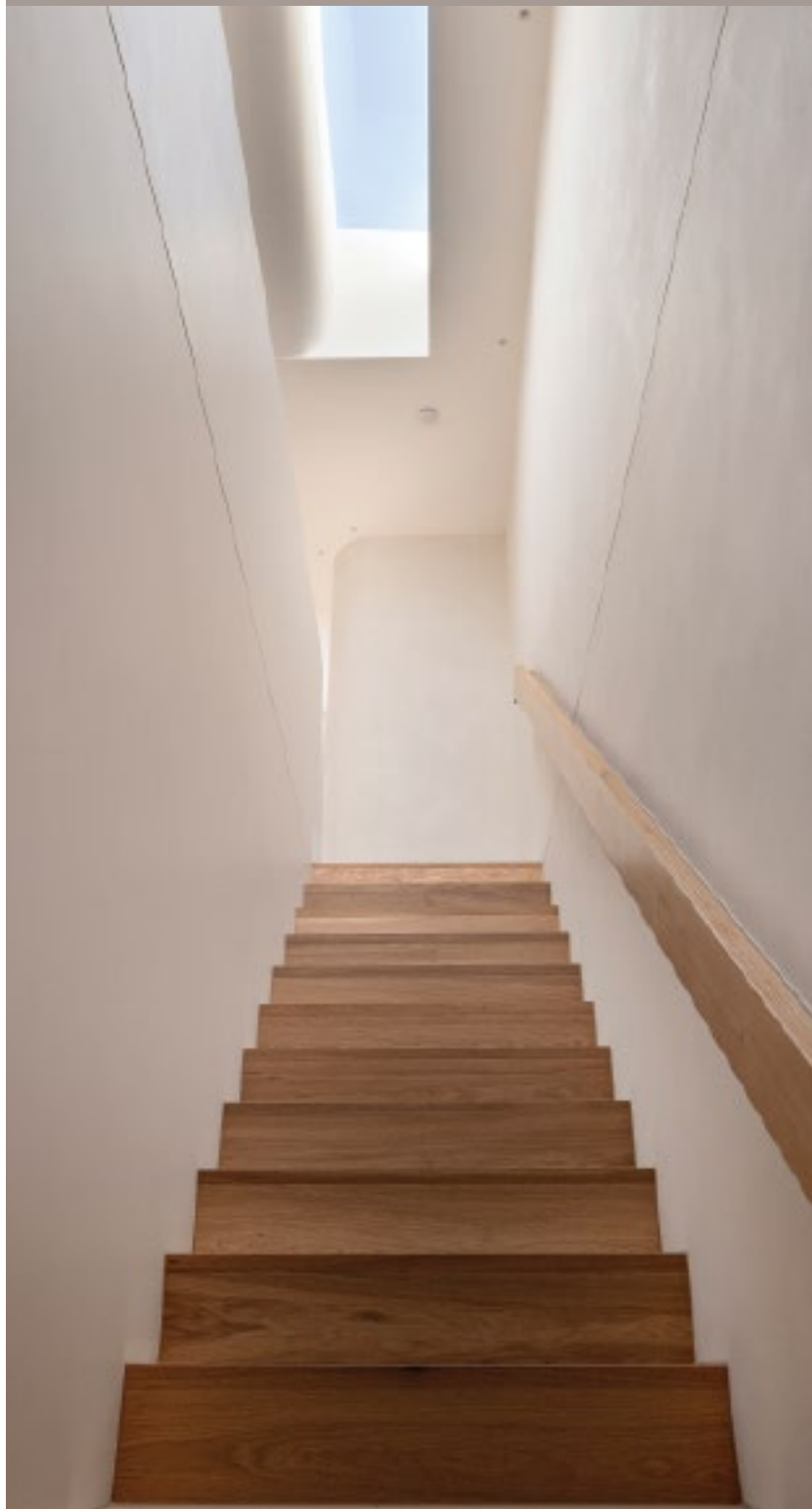
**Exterior Base Render//** Stoarmat Classic

**Exterior Finish//** Stolit Milano / Stolit Signature Rough 10

**Interior//** Stolit Milano

---

## BRANDS FEATURED





**THIS PAGE//** Lavish Twin Rail Shower | **Colour:** Brushed Nickel | **Spout Type:** Swivel Spout | **Spray Settings:** Single Function Handset  
**WELS Rating:** Handshower WELS 3 STAR 9.0 L/M | Overhead Shower WELS 3 STAR 9.0 L/M



---

# FORM

## *function & finish*

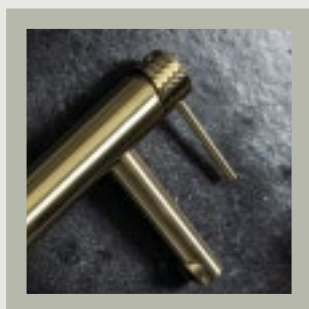
REDEFINE EVERYDAY LIVING.



Since 1935, Greens Tapware has been shaping the way people experience water in their homes. What began as a small New Zealand business has grown into an internationally recognised brand, respected for blending timeless aesthetics, precision engineering, and human-centred innovation. Today, Greens stands at the forefront of tapware and shower design, proving that form and function can work in perfect harmony.



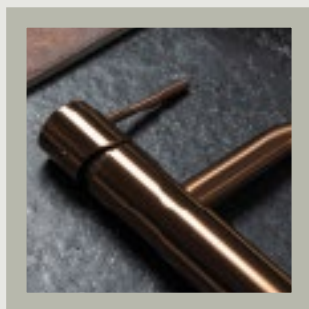
**Model.** Swept Basin Mixer  
**Colour.** Gun Metal



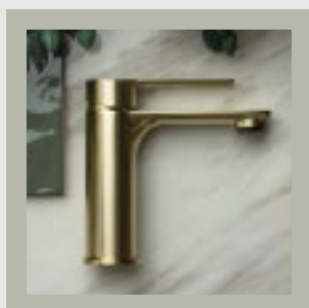
**Model.** Mika Basin Mixer  
**Colour.** Brushed Brass



**Model.** Glyde Syntra Rainboost  
**Colour.** Matte Black



**Model.** Giselle Basin Mixer  
**Colour.** Brushed Copper



**Model.** Glyde Syntra  
**Colour.** Brushed Brass

For Greens, design is never about creating technology for technology's sake. Instead, every piece is developed with purpose, crafted to enhance everyday living.

"When designing, we focus on form and function," the team explains. "We want tapware that is aesthetically pleasing and at the forefront of trends in the home, but also balanced against function for purpose. Not creating technology for the sake of technology, but designing pieces that add value to the everyday—whether that's taking an extra minute to feel more relaxed in the shower, or having your hands full of cooking mess and being able to turn the mixer on with a tap."

It's this philosophy that elevates Greens beyond plumbing fixtures. Each collection is a thoughtful balance of beauty and utility, turning ordinary moments—washing your hands, rinsing vegetables, taking a shower—into rituals of ease and comfort.

Colour finishes are now a defining element in modern bathrooms and kitchens, and Greens has become a leader in delivering finishes that embody both sophistication and resilience.

Their palette of premium metallics, including brushed nickel, brushed brass, gun metal, copper and classic chrome, offers timeless style that adapts to a range of interiors, from sleek contemporary to enduring classic. These finishes are more than surface-level beauty; they are engineered for longevity, ensuring that every piece continues to inspire long after installation.

At the heart of Greens' finishes is Physical Vapour Deposition (PVD) technology, mastered in-house to ensure the highest standard of quality. This advanced process infuses molecules directly into the tapware's surface, creating finishes that are:

- Scratch-resistant, withstanding the demands of daily life.
- Long-lasting, maintaining depth of colour and sheen over time.
- Versatile, offering a variety of tones, including the ever-changing colour trends, loved by contemporary design enthusiasts.

- New exciting finishes – Matte Black PVD, which is the first matte PVD in AUS
- New Brushed Bronze Finish is now available

"Our PVD is in-house," Greens notes. "That means we know the quality we need, and we deliver to it."

By keeping this expertise within their own facilities, Greens guarantees not just striking aesthetics but also lasting durability, an essential quality for modern homes.

Greens doesn't stop at looks. Their in-house design team continually develops innovations that redefine how water is experienced in daily life.

---

### Everyday Luxury, Built to Last

Greens Tapware has established itself as a brand where design meets durability. From their sophisticated colour finishes to their pioneering water technologies, every product is a commitment to both beauty and performance.

For homeowners, architects, and designers, choosing Greens means choosing tapware that elevates everyday rituals, stands the test of time, and brings a touch of luxury to the simple act of turning on a tap.

As Greens says best: it's where life meets water, and it has never looked, or felt, more refined.

---

#### OPPOSITE ABOVE/

Tesora Pull Down Sink Mixer

**Colour:** Brushed Nickel

**Spout Type:** Swivel Spout

**Spray Settings:** Dual Function Spray

**WELS Rating:** WELS 5 STAR 5.0 L/M

#### OPPOSITE BELOW//

Novi Gooseneck Sink Mixer

with Smart Aerator

**Colour:** Matte Black

**Spout Type:** Swivel Spout

**Spray Settings:** Dual Function Spray

**WELS Rating:** WELS 5 STAR 6.0 L/M



---

## SHOWER INNOVATIONS

### BubbleJET®:

Infuses air into water for a spa-like drench.

### AirFlo®:

Creates an invigorating, aerated spray.

### RainBoost®:

Delivers fuller coverage, even in low-pressure conditions.

---

## TAPWARE INNOVATIONS

### Kontakt:

Enables intuitive, hands-free operation, perfect for kitchens.

### Cold Start:

Designed for energy efficiency, reducing hot water use.

### Progressive Cartridge:

Offers smooth, precise control over water temperature and flow.

These technologies are practical, people-focused, and always designed to make life easier, more comfortable, and more sustainable.



A different way  
to do walls.



A proud Australian  
manufacturer



Designed and made in Australia, Laminex Architectural Panels seamlessly integrate walls, ceilings and joinery to create considered spaces with refined architectural detail.

With premium, realistic woodgrain décors, versatile profiles and our innovative InvisiLock™ joining system, these panels offer a new level of design versatility and efficiency for both residential and commercial interiors.



### **Classic Flat profile**

Introducing the refined Classic Flat profile, offering a clean, modern, reversible panel for added flexibility, allowing you to choose between a subtle pencil line joint or a bold express joint.

### **Decors and finishes**

Available in eleven décors from the Laminex Colour Collection, including rich Australian natives from the Next Generations Woodgrains range, ensures seamless integration throughout your next project. These panels are also available in premium AbsoluteGrain® finish, authentically replicating natural timber grain.

### **Smarter, faster installation**

Our InvisiLock™ joining system is exclusive to the Laminex Architectural Wall Panel range. This system allows each panel to be connected quickly and seamlessly, providing a bow and gap-free finish and minimises installation time.



Learn about the  
full range of Laminex  
Architectural Panels.

# Laminex®





# A New Age of Glamour

Phoenix's Wiltern Collection and  
the Romantic Return of Art Deco

There's a magic in Art Deco that never truly faded. Born in the heady rush of the 1920s and 1930s, it was a design movement that shimmered with optimism, extravagance, and freedom. Geometric lines danced across polished surfaces, metallics gleamed under soft light, and every detail whispered of modernity wrapped in luxury. To live with Art Deco was to embrace possibility, to surround yourself with beauty that promised the future could only get brighter.



# WILTERN COLLECTION



BASIN SET



WALL BASIN BATH SET



SHOWER WALL MIXER



BASIN MIXER



TWIN SHOWER



SINK MIXER



HAND TOWEL HOLDER

 **PHOENIX™**

Now, a century on, that romance is returning. In a world often defined by minimalism and restraint, homeowners and designers alike are craving interiors that seduce the senses—spaces that feel rich, tactile, and unapologetically glamorous. Art Deco offers precisely that: a visual and emotional escape, where geometry and symmetry bring order, while bold textures and finishes bring drama.

It is within this revival that Phoenix's Wiltern Collection makes its entrance. Designed for the renovation market, Wiltern is more than tapware, it's a statement. Following the celebrated success of the Cromford Collection, Wiltern is Phoenix's tribute to an era that prized craftsmanship and beauty as much as function. "Wiltern strengthens Phoenix's portfolio with a Deco-inspired collection designed for the renovation sector. Following the success of the Cromford Collection, Wiltern represents Phoenix's continued commitment to delivering design-led, functional solutions that balance heritage inspiration with modern practicality." More than just elegant tapware, Wiltern is a complete collection of tapware, showers, and accessories, available in four distinctive finishes.

Every curve, line, and texture of Wiltern feels carefully considered, as though it belongs to a scene set beneath chandeliers and velvet drapes. The collection's precise geometry and rich surface detail are modern marvels of manufacturing, yet their essence is undeniably Deco.

Alex Tomlinson, Phoenix Design Engineer and the creative mind behind both Cromford and Wiltern, explains the thinking:

"The Art Deco era was all about craftsmanship and exploring new materials and processes to create a timeless design aesthetic. Wiltern's precise geometric design language and rich texture explore what's possible when modern manufacturing techniques meet the optimism and extravagance of the twenties and thirties. Wiltern is designed to resonate with today's homeowners, renovators and specifiers, offering a touch of Art Deco luxury that will never go out of style."

The journey from first concept to final creation spanned a year, proof of Phoenix's commitment to not only designing tapware, but sculpting pieces that feel like heirlooms.

In many ways, the resurgence of Art Deco is more than just a trend. It's a yearning for the sensuality of design, for interiors that feel indulgent yet enduring, glamorous yet grounded in craftsmanship. With collections like Wiltern, the golden age of Deco is no longer a chapter in history books. It is alive once more, sparkling in the light, ready to transform the everyday into the extraordinary. ♦







# lachlan shepherd

## ARCHITECT

When you first meet Lachlan, you don't immediately think "architect." There's none of the aloofness, the ego, or the sharp edges that often accompany the stereotype. Instead, he's soft-spoken, attentive, and quick to laugh, a young man who seems more interested in people and listening than talking. And yet, beneath that modest exterior is a relentless drive, a detail-oriented mind, and a determination that is already shaping his career in architecture.

**story//** Tracey Pocock

**photography//** Rodney Brown





**"I've always been drawn to the idea of creating something lasting," Lachlan says, leaning back in his chair. He sits casually, smiling and bouncing his 11 month old daughter on his leg. "When you design a building, you're not just making an object — you're creating a space where people will live and make memories. That's a responsibility I don't take lightly. I'm pretty lucky to design houses and influence people's lives - that's what I feel grateful for."**

Lachlan's path into architecture wasn't one of flashy ambition but of steady curiosity. He talks about his younger years in his architect-designed family home not in terms of grand plans but of small fascinations — sketching, noticing details in buildings others would overlook, tinkering with ideas of space and structure.

"I was always the kid who'd stop and stare at how things were put together," he admits with a smile. "My friends wouldn't see the things I noticed. I remember looking at the knots in the timber and seeing faces and shapes in each one."

Architecture also ran in the family. His uncle was a successful architect, and Lachlan remembers being fascinated by his drawings and models. "I think seeing his work made it feel real to me — like this wasn't just something in books, but a career you could actually live on. It was inspiring." Living in

a house designed by his uncle and built by his father was really something special. He knew the finishes in the home were worth the effort and it was the natural imperfections that he came to love.

That natural attentiveness has since become one of his greatest strengths. Colleagues describe him as meticulous, someone who can hold both the big picture and the tiniest detail in his head at once. He doesn't see it as a quirk but as the essence of good design.

"Details matter," he says firmly. "They're what make the difference between a space that feels right and one that feels off."

It's an ability that allows him to look at a block of land and not just see the constraints, but imagine a home that fits and feels inevitable — as though it was always meant to be there.

In an industry often fuelled by competition and self-promotion, Lachlan takes a different approach. He doesn't talk about signature styles or personal brands. Instead, he speaks about creating spaces that function, look good as well as collaboration, and about listening, and serving people.

"Architecture is never just one person's vision," he explains. "The best outcomes come when you bring together different voices, clients, engineers, builders. My job is to listen and bring those ideas into harmony."

---

**opposite //** Lachlan with his labour of love, a Series 2a 1968 Land Rover.

**above //** Located in Bellbrae, the building was designed for robustness, minimal maintenance and draws reference to mid-century modernist principles.

---

This humility isn't a weakness; it's his quiet strength. Even in his unique work featured on *Grand Designs* - his focus was never on the cameras or acclaim. "The project on *Grand Designs* could have been about showmanship," he says. "But for me, it was about how the family would live, how light moves through their spaces, and how materials feel under your hand. That's what makes a house a home." He made sure to take his clients specific needs to create what was right for them, and it wasn't necessarily for anyone else.

Rather than chasing the spotlight, he finds satisfaction in the process. "I don't need recognition," he shrugs. "What matters is that the people using the building feel comfortable, that it serves them well. That's the reward."

Ask Lachlan about his influences, and he's quick to reflect on the people and projects that shaped him. "It started at home," he says. "My uncle was a successful architect, and growing up in our family house, I saw



#### above and top//

Dubbed the concrete house and made famous by appearing on Grand Designs Australia. The Torquay based house was designed to very specific needs of the owners, it's dominant concrete presence is not to everyone's taste, but met the brief with creative flair which the Lachlan's clients loved.

#### top right//

Torterra house interior. The Torterra house uses biophilic design principles with a concrete structure supporting a planted/green roof above. Recycled Oregon timber offcuts were used in the formwork for the concrete ceiling, creating a textural quality to the material. Recycled brick and linen sheers work to soften the rawness of the concrete blockwork and ceiling, adding a sense of warmth to the space.





what thoughtful design could be. Later, working at McGlashan Everist, I was surrounded by brilliant architects who taught me to think carefully about space, light, and materials."

He also cites Australian modernist Glenn Murcott as an inspiration. "There's a clarity and honesty in his work — the way he balances simplicity with warmth, and how every element has a purpose. That idea of thoughtful restraint really stuck with me."

For Lachlan, modernism isn't just an aesthetic. "It's about designing for people, not decoration," he explains. "Function, proportion, how someone moves through a space — that's what matters. Every line, every junction, every material has a reason. That kind of careful, considered approach is what I aim for in all my projects."

He also appreciates modernism's attention to restraint. "It's about stripping things back to what's essential. That doesn't mean boring, it means thoughtful. Every line, every proportion, every material has a reason. That kind of design discipline really resonates with me."

Of course, humility doesn't mean lack of ambition. Lachlan is quietly driven, guided by

a genuine curiosity about how things come together. "I was always the kid who'd stop and stare at how things were put together," he says. "Even in our family home, I'd notice the way light hit a corner or how a beam joined the wall. Those little things stayed with me."

That attentiveness has carried through to his work. "I spend a lot of time thinking about how materials meet, how a shadow falls across a surface, or how a room feels when you move through it," he explains. "Most people wouldn't consciously notice it, but they'll feel it. That's the thing about detail — it shapes the way people experience a space."

Even outside the studio, he notices things others wouldn't. Friends notice the same care in his everyday life: the proportions of a shelf, the rhythm of a staircase, or the pattern of light through a window. "Design is everywhere once you start noticing it," he says. "It's not about obsession, it's about seeing the world and thinking about how it can inspire the spaces we live in."

Lachlan talks about materials with a quiet enthusiasm. "I've always been drawn to honest, natural materials — concrete, timber, rammed earth. There's a warmth and texture to them that you can't replicate," he says.

"Concrete isn't cold if it's used thoughtfully; it has weight, presence, and a kind of poetry. Timber and rammed earth bring a sense of the landscape inside, and they age beautifully over time. I like the little imperfections — the natural knots in timber, the subtle variations in rammed earth — they're part of what makes a space feel human. Those imperfections are to be celebrated; they make a house feel like a home."

For Lachlan, materials aren't just about aesthetics. "Working with these elements is about creating a homely environment. It's about making spaces where people feel comfortable, where the textures and tones invite you to linger. Every choice is about the way people experience a space, not just how it looks on paper."

Architecture, as Lachlan points out, isn't always as smooth as the finished product suggests. Deadlines tighten, budgets shrink, unexpected changes appear. But he sees those challenges not as frustrations, but as fuel.

"There are always obstacles," he says. "But they push you to think differently, to problem-solve in creative ways. Some of the best design solutions come out of limitations."

This mindset, to embrace problems as opportunities, has earned him respect from those around him. He's not the loudest voice in the room, but his solutions carry weight because they're thoughtful, practical, and deeply considered.

Despite his intense focus, Lachlan knows the importance of balance. He talks about weekends spent outdoors, often taking a walk with his family or chasing the perfect wave, as a way to reset. "Nature is the best teacher of design," he says. "The way light moves, the textures, the proportions, it's all inspiration."

Travel is another passion, particularly trips that allow him to experience architecture firsthand. "You can look at photos of buildings all day," he explains, "but until you walk through them, feel the materials, sense the scale, you don't really understand them." His dream destination? New York. His love for the city and its street layout and urban landscape has always been something he has loved since a project in his uni days.

Even in downtime, his detail-oriented mind doesn't fully switch off. He finds himself drawing - being creative, and observing the world with the same careful eye he brings to his projects. "I guess design is just part of how I see the world," he admits.

Still relatively early in his career, Lachlan isn't rushing to define himself. Yet, his vision for the future is clear. Sustainability is at the heart of it. Longevity, too. This means considered materials, timbers, stone, concrete and timeless use of space.

"I want to design buildings that still matter in 50, 100 years," he says. "Not just because they've lasted physically, but because they've continued to serve people well. Architecture shouldn't just be beautiful - it should be useful, accessible, and enduring."

His ambitions aren't about scale or prestige. They're about meaning. He dreams of designing community-focused projects, homes, and spaces that genuinely improve people's lives. "If someone can walk into a

building I've designed and feel at ease," he says, "that's success to me."

Outside of the office, Lachlan finds grounding in the everyday rhythms of life. With a 14-year-old and an 11-month-old at home, he cherishes the small moments: a walk on a sunny morning, or simply stepping outside to reconnect with nature. "She's not going to be this age forever," he reflects on the walk he took pushing her in her pram to his studio. "It's about enjoying it while you have the chance." That same sense of patience and care extends to his personal projects, like restoring a vintage car which is a project he has worked on for a couple of years already. "It's mechanical, it's hands-on, and sometimes I feel like I've done nothing in an hour, but that's okay," he laughs. For Lachlan, the process is just as meaningful as the finished product, and he hopes one day his children will see the car not just as a vehicle, but as a testament to time, attention, and care - a reflection of his approach to both life and architecture. ♦

Concrete isn't cold if it's used thoughtfully; it has weight, presence, and a kind of poetry. Timber and rammed earth bring a sense of the landscape inside, and they age beautifully over time. I like the little imperfections - the natural knots in timber, the subtle variations in rammed earth - they're part of what makes a space feel human. Those imperfections are to be celebrated; they make a house feel like a home.



### A Different Kind of Architect

What strikes you most about Lachlan isn't just his skill or his ambition - it's his humanity. He's the kind of person who values people over projects, process over glory. He doesn't measure success in awards or accolades, but in the quiet satisfaction of a space that works, a detail that feels right, a client who feels heard.

As his journey unfolds, one thing is clear: Lachlan represents a new kind of architect. Not one driven by ego, but by empathy. Not one seeking fame, but one seeking to make life better, one carefully considered detail at a time.

And maybe that's what architecture needs most right now - not louder voices, but humbler ones. Architects who, like Lachlan, understand that buildings are not just structures, but vessels for human experience.





**top and opposite//** Skyline house in Lorne is located on a steep hill in a bush fire prone area, the design responds to these challenges by making the most of north winter sun in living zones.

**above //** The brief focused on visual engagement with the golf course and ocean views, whilst still providing a sense of privacy and protection. Externally, the material was selected for longevity and harmonisation with coastal surrounds.

# Refined by Design

THE DENMAN PROJECT

**Builder//** Orbis Constructions

**Interior Design//** Nala Design

**Styling//** Arch Melbourne

**Photography//** Spacecraft





Tucked along the banks of Ferndale Creek in Glen Iris, Victoria, the Denman Project by Orbis Constructions and Nala Design is a serene expression of craftsmanship and connection to nature. Featuring Phoenix's award winning Nuage Mixers and Ormond Showers with LuxeXP™ technology, the home exemplifies their Refined by Design ethos, where thoughtful design meets enduring functionality.

Orbis Constructions and Nala Design, led by director Joel Ryan and interior designer Nala Ryan, are known for creating homes that prioritise craftsmanship, longevity and a deep connection to their natural surroundings. Their past collaboration on the Sunhill Project exemplified this shared ethos, with Phoenix tapware, showers and accessories thoughtfully specified throughout.

The benevolence of the Sunhill Project was found in the tone and texture of the surfaces used and the connectivity between the outdoor and indoor spaces. These were highlighted using design elements that brought small, unexpected moments around every corner.

Phoenix was used as one of these design elements, never underestimating the importance of function combined with style. That trusted relationship between Joel and Nala and Phoenix continues in their latest project, Denman Avenue.

Tucked into a lush pocket of Glen Iris, along the tranquil banks of Ferndale Creek, the Denman Project is a masterclass in the craftsmanship that Joel and Nala are now renowned for, with the project merging the use of enduring materials and a deep connection to nature. It's a home that feels both grounded and elevated, where every element has been carefully considered to create a sense of calm and timeless beauty.

Phoenix is proud to have been specified throughout this exceptional residence, with our award winning tapware, showers and accessories enhancing each space through their Refined by Design ethos.

The material palette is robust yet warm, with solid off-form concrete, hand laid recycled bricks, and glacial oak cladding, all selected to harmonise with the surrounding bushland. Inside, the interiors, designed by Nala, carry the same thoughtful restraint. The spaces unfold

#### **OPPOSITE PAGE//**

This elegant bathroom features the Ormond Twin Shower, Nuage Shower/Wall Mixer and the Radii Heated Towel Ladder all presented in Brushed Nickel

#### **ABOVE//**

The Blix Flexible Hose Sink Mixer 220mm Round - Lead Free finished in Brushed Carbon.





softly, with natural light, textural finishes and a quiet palette that exudes serenity.

"There's this magic in the way the spaces unfold. Soft light, beautiful materials, and a real sense of tranquility that follows through every room," says Joel. "That design ethos carries through to every detail, and that's where Phoenix comes in."

Phoenix was engaged to supply tapware, showers and accessories throughout the Denman Project, aligning with the build's commitment to innovation, beauty and longevity.

"Phoenix creates bathroom and kitchen fittings through refined Australian design," says Alex Tomlinson, Design Engineer at Phoenix. "For over 35 years, we've been delivering quality, innovation, and precision through our products, designed right here in Melbourne."

Central to the project is the Nuage collection, a suite of sculptural, award winning mixers that blur the line between art and engineering. With its soft, organic curves, Nuage perfectly echoes the natural, calming interior language of the home.

"Nuage has received multiple international design accolades, including an iF Design Award and an International and Australian Good Design Award," says Tomlinson. "It's a true reflection of our Refined by Design philosophy."

The collection also holds a deeper narrative. Inspired by Phoenix Design Lead Ban Liu's visit to Taiwan's Seven Star Lake, Nuage's design draws from smooth pebbles, shifting water, and personal memory, elements that shape its fluid, harmonious form. ♦

#### OPPOSITE ABOVE LEFT//

Mekko Sink Mixer Squareline finished in Brushed Carbon, with the 5000 Series Large (42 litre capacity) Sink and Stainless Steel Colander in Brushed Carbon.

#### OPPOSITE ABOVE RIGHT//

5000 Series Double Bowl Sink 802(W) x 466mm (L) (220mm depth) finished in Matte Black. Each bowl has a 28 litre capacity. Matched with the Prize Flexible Coil Sink Mixer in Brushed Nickel and a Roller Matt finished in Brushed Carbon.

## TECHNOLOGY MEETS TRANQUILITY

The home also features Ormond showers fitted with LuxeXP™ technology, designed to elevate the everyday with innovation beneath the surface. LuxeXP™ combines pressure swirl atomiser nozzles with Tesla valves to deliver an enveloping, rain like cascade.

Recognised with a 2023 Red Dot Design Award, the Ormond shower collection exemplifies how Phoenix continues to push the boundaries of form, function and user experience.

## ELEVATED FUNCTIONALITY IN HARD WORKING SPACES

In the kitchens, laundries, multi-purpose basement rooms and butler's pantries, functionality meets refined design with the inclusion of Phoenix 5000 Series single and double bowl sinks in a sleek Matte Black finish. These have been paired with high performance sink mixers, including the Prize Sink Mixer with its flexible coil hose and the Blix Sink Mixer featuring a rubber flexible hose, both offering practicality without compromising on style. Complemented by Phoenix sink accessories such as stainless steel colanders and roller mats, each space is transformed into a highly functional workstation, enhancing the day-to-day usability of the home while maintaining a cohesive, design led aesthetic.

The inclusion of Phoenix Vertical Heated Towel Rails and Heated Towel Ladders adds a layer of everyday luxury to the bathrooms, offering both warmth and functionality. With their sleek, minimal design, they elevate the space while ensuring towels are always warm, dry, and within easy reach.

From the thoughtful architectural detailing to the emotionally resonant design inspiration, Denman Avenue is more than a build, it's a lived experience.

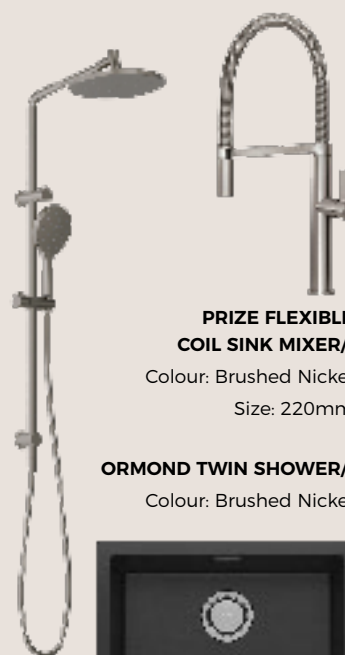
## PHOENIX PRODUCTS FEATURED



**MEKKO SINK MIXER SQUARELINE//**

Colour: Brushed Carbon

Size: 190mm



**PRIZE FLEXIBLE COIL SINK MIXER//**

Colour: Brushed Nickel

Size: 220mm

**ORMOND TWIN SHOWER//**

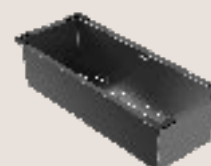
Colour: Brushed Nickel



**5000 SERIES LARGE SINGLE BOWL//**

Colour: Matte Black

Size: 593(W) x 466(L) x 220mm depth



**STAINLESS STEEL COLANDER//**

Colour: Brushed Carbon



**RADII HEATED TOWEL LADDER//**

Colour: Brushed Carbon

Size: 750 x 740mm

# MEET OUR TEAM OF QUALIFIED *Stylists*

Our team of qualified interior stylists aren't just here to help, they're here to inspire. From the moment you step into our Geelong Design Centre, you'll feel the difference. Our stylists listen, guide, and collaborate with you to turn ideas into fully-formed visions, complete with mood boards, material samples, and expert advice on the latest trends.

Whether you're building, renovating, or refreshing a single space, we'll turn a sometimes overwhelming process into a smooth and relaxed experience.

TILES | BATHWARE | FLOORING | PLASTER | CLADDING | INSULATION



**Walkers Design Centre**

93 West Fyans St, Newtown | (03) 5222 1255 | [www.walkers.com.au](http://www.walkers.com.au)

 **WALKERS**  
DESIGN CENTRE





---

#### PRODUCTS LIST

FIVE FLAT BAR  
HEATED TOWEL LADDER//


Colour: Brushed Carbon

Size: 550 X 740mm

NUAGE WALL BASIN / BATH  
MIXER SET// - LEAD FREE

Colour: Brushed Carbon

Size: 200mm

 **PHOENIX**

---



# WHERE DESIGN MEETS HUMANITY:

Johnson Suisse and Roca  
Group's Global Impact.

In the world of bathroom design, few names carry the global influence of Johnson Suisse. Here in Australia, the brand operates under the umbrella of the Roca Group, a network spanning 81 factories across more than 170 markets. This reach means every piece, from a tap to a bath, benefits from a fusion of global expertise and local understanding.









### Listo Smart Toilet

Clean lines and quiet elegance at first glance but brimming with subtle innovations. An LED night light, presence sensor, self-cleaning nozzle, and integrated washing/drying panel are all designed to work seamlessly together. It even features a built-in backflow prevention system that meets Australian standards without additional fittings—an invisible detail that's quietly impressive.



### Venezia Collection

For those wanting more than functionality, the Venezia Collection offers five carefully considered finishes—Chrome, Matte Black, Gunmetal, PVD Brushed Nickel, and PVD Brushed Brass. Its bath designs, from sculptural freestanding forms to space-saving corner models, invite the kind of lingering, restorative bathing that feels like a small rebellion against the rush of daily life.

The approach is measured and thoughtful, beautiful products that work intuitively, built on a foundation of engineering precision. But behind the polished surfaces lies a bigger story. Sustainability at Roca Group isn't a side project—it's woven into the fabric of how the company operates. Aligned with the United Nations Sustainable Development Goals, the business has earned a Platinum Medal from EcoVadis, ranking in the top 1% of companies worldwide for sustainability performance.

Since 2018, they've halved their energy use, carbon emissions, waste, and water consumption. Some factories now run entirely on renewable energy, and one, described as the world's first zero-emission sanitaryware plant, has set a precedent for the industry. Circular economy principles guide product design, ensuring longevity and minimising raw material use.

And then there's the human side. In rural Madagascar, a school once relied on a single, contaminated water source an hour's walk away. Through the We Are Water foundation (established by Roca Group in 2010) a well and sanitation block were built on-site. Today, more than 300 children have access to clean water daily, drastically reducing illness and improving attendance. For the teachers, it means less time managing health crises and more time focused on learning.

In India, the foundation worked with local partners to install rainwater harvesting systems in drought-prone villages. What began as an infrastructure project evolved into something larger—training programs for women to maintain and manage the systems, giving them a new level of autonomy and respect within their communities.

These stories aren't marketing spin; they're lived experiences of the roughly four million people reached so far by the foundation's projects. Whether it's a family in Peru no longer carrying heavy buckets from a distant river, or a Cambodian village school that can finally offer hand washing facilities, each project tackles the practical, health, and social challenges tied to water access. ♦



Community health is improved by fresh running water.



In a sector often focused on surface beauty, Johnson Suisse and the Roca Group are proving that design can be more than skin deep. Their bathrooms aren't just places to get ready in the morning—they're small expressions of a bigger philosophy: that good design should serve people, respect the planet, and leave a lasting positive mark long after the taps are turned off.

**Clockwise Images//**

Children pumping water, a daily routine.

Children in a classroom.

Women collecting water for their village.







Clockwise Images left to right//

Child demonstrating the communal toilet in his village.

Running water and wash basin has been installed in this communal toilet.

Primitive toilet in the desolate hot and dusty landscape.

Boys patiently waiting at their village water collection location.

Women start the journey back to their houses after the daily ritual of water collection at their village.













# the art of contrast



## An Urban Bathroom with an Industrial Edge

Built by Adore Bathrooms and Kitchens this bathroom beautifully exhibits the blending of black steel, warm timber, and stark white to create an urban feel with an industrial edge. The use of sleek steel fixtures combined with the warmth of timber and the clean simplicity of white surfaces creates a striking balance between rugged and refined.

---

### PROJECT DETAILS

**Builder//** Adore Bathrooms & Kitchens  
[www.adorebathroomsandkitchens.com](http://www.adorebathroomsandkitchens.com)

**Bath//** Lucia VX12 1800 Freestanding Stone Bath

---

### BRANDS FEATURED

**KASKADE**  
STONE BATHS & BASINS

---



# Rich & Luxurious

THE RISE OF ENGINEERED FLOORING





**Timber has always held a certain romance in design. Its warmth, texture, and unmistakable connection to nature make it one of the most evocative materials for the home. From grand heritage residences to pared-back contemporary spaces, wood underfoot has the power to both anchor and elevate an interior.**

Brands such as Tudorwoods are reshaping the way we think about timber through engineered flooring. Moving beyond tradition, Tudorwoods brings together the raw beauty of hardwood with innovative construction methods that respond to the needs of modern living. Each board is carefully layered for strength and stability, allowing for wide, graceful planks and seamless expanses of grain without the risks of warping or shifting that can come with solid timber. It's timber, reimagined for architecture today.

Designers are increasingly drawn to Tudorwoods' engineered flooring not only for its performance but for the creative freedom it offers. Pre-finished boards arrive ready to lay, streamlining the installation process and eliminating the dust and disruption of on-site polishing. This precision makes it possible to achieve a flawless surface, whether specified in a minimalist apartment or a heritage restoration. Direct stick application creates a sleek, seamless look while preserving ceiling height, a detail that resonates in projects where proportion and light are paramount.

---

**Inset Image Above//**

**Product//** Classic Australian

**Dimensions//** 1820 or 2100x180x14mm

**Product Colour//** Australian Blackbutt

**Image Left//**

**Product//** Fontaine 190mm Wide Oak

**Dimensions//** 1900x190x15mm

**Product Colour//** Hidalgo

---



---

**Product//** Fontaine 190mm Wide Oak  
**Colour//** Valis  
**Dimensions//** 1900x190x15mm

---





**Image Above//**

**Product//** Oakitecture Parquetry

**Product Colour//** Caramel Sundae

**Image Left//**

**Product//** Fontaine 190mm Wide Oak

**Dimensions//** 1900x190x15mm

**Product Colour//** Valis

#### FONTAINE RANGE DETAILS

##### Colours//

Blank	Brown Oak
Caramel Sundae	Edgey
French Grey	Hidalgo
Light Tan	Natural Oak
Smokey Grey	Valis
White Smoke	

**Wear Layer//** 4mm Veneer

**Dimensions//** 1900x190x15mm

**Profile//** Tongue and Groove

**Package//** 6 pcs/carton

**Area//** 2.166 sqm/carton

#### BRANDS FEATURED

**TUDORWOODS**

**FONTAINE.**


There's also an environmental dimension to the story. With its layered construction, Tudorwoods maximises every cut of timber, making more responsible use of natural resources while delivering the authenticity of real wood underfoot. In an era where material stewardship is central to architectural discourse, this approach positions Tudorwoods as both a contemporary and conscientious choice.

Engineered flooring from Tudorwoods is not about replacing tradition but refining it. It embodies the duality of craftsmanship and innovation, offering a foundation that is at once timeless and forward-thinking, proof that even the most classic of materials can find new relevance in today's design landscape. ♦

**Walkers are the exclusive authorised dealer of Tudorwoods in the Bellarine area.**

# Timeless Charm

WITH LOW MAINTENANCE



Wall cladding plays a vital role in both the performance and visual appeal of a home, balancing aesthetics with functionality to deliver comfort and durability. Nuline® is a modern, weatherboard-style cladding that combines timeless charm with low maintenance. Featuring a tongue-and-groove design for seamless joins, easy installation, and two profile options, it offers long-lasting durability with a sleek, sophisticated finish.





#### **Nuline® RANGE DETAILS**

**Profiles//** Square and Bullnose

**Sizes//** 4200x175 / 205 x 4200mm

**Weatherboard thickness//** 14mm

**Area//** 2.166 sqm/carton

**Certification//** Codemark certified

Complies with BAL40 as required in AS 3959

#### **INSTALLATION**

Manual Nailing, Gun Nailing or Screw Fixing

[www.innovafibreceement.com.au](http://www.innovafibreceement.com.au)

BRANDS FEATURED

**INNOVA** **Nuline®**







# Water, steam, and the embrace of an intimate space that feels familiar.

The bathroom as a place for emotions and daily rituals. The pursuit of holistic well-being through materials, shapes and technologies: the sensual tactility of ceramics that mediates the ancestral bond with water; the warm welcome of washbasins, sanitary fixtures and furnishings designed around us; efficient but hidden technology, to enjoy the space in a natural and reassuring way.

## OPPOSITE PAGE//

Globo T-Edge Oval Countertop Basin 500mm  
Colour: Nero Opaco

## ABOVE INSET LEFT//

Lalita 610mm Oval Countertop Basin

## ABOVE INSET RIGHT//

Part of the manufacturing process for the T-Edge Organic Round Countertop Basin 350mm

Without ever failing to fulfill the commitment of reducing the environmental impact. Since 1980, Ceramica Globo has been interpreting the functions and aspirations related to the bathroom. Which translates into efficient, technologically advanced and high quality collections, thanks to the complete internal management of the product genesis.

To Ceramica Globo, doing business means making a choice of awareness. It implies pursuing product research in the culture of social and environmental sustainability. It represents the promotion of made in Italy through the enhancement of know-how and respect for the territory. It signifies technological efficiency and rationalisation of resources. The application of strict protocols for a totally reliable product that is safe and not harmful to health. A commitment to innovation that reflects the inexpressible factor of consistency.

Ceramica Globo safeguards Made in Italy and a concrete, contemporary and functional design. In its three factories, it controls and directs each phase of the

production cycle with more than 1500 catalogue items. Ensuring reliability and high quality standards, it uses natural and recycled materials which are subject to strict controls for an increasingly sustainable manufacturing.

Each product of Ceramica Globo comes from constant research to obtain high performance and long-term durability. Above all, harmonic shapes: like the elegant 6 mm thin edges, achieved thanks to the exclusive ceramic mixture GLOBOTHIN®.

## BAGNO DI COLORE

A wide palette of 14 ceramic colours, available on many products and collections. The washbasins and sanitary fixtures of the Bagno di Colore line feature the exclusive CERASLIDE® enamel and the BATAFORM® antibacterial treatment, for maximum uniformity, resistance and hygiene

## LE PIETRE

Grits, arabesque rocks, rare and precious marbles and stones that have always been part of our local architectural history.



Ceramica Globo recreates these refined effects in some washbasins of its collections to embellish the atmosphere of the bathroom and give the compositional possibilities of the setting an even more articulated and diversified structure.

#### CERASLIDE®, BATAFORM®

A special formulation of glaze, obtained with an accurate temperature control during the various cooking phases and in a cycle of up to 26h, to ensure uniformity, resistance and inalterability over time. Added to the manufacturing is the antibacterial treatment based on silver ions which gives maximum hygiene.

#### SENZABRIDA®

The study of the water exit point to eliminate both the edge and the hidden

parts of the toilet bowl. Obtaining an optimal water flow, at the service of maximum hygiene, and also accurate aesthetics." ♦

**bathe**  
and the finest bathroomware

#### ABOVE TOP//

Mode SENZABRIDA® Floor Standing Toilet Pan & Soft Close Seat – Matt White.

#### ABOVE//

OPI Tile wall hung structure (left basin) in Matt White, matched with the KOI round bathtub designed in collaboration with Federica Biasi Studio.



#### FEDERICA BIASI

Industrial Designer

Federica Biasi Studio worked with Globo on The Koi bathtub series, a collection of bathtubs that embodies elegance and tranquility, inspired by the grace and beauty of koi fish, the Japanese symbol of serenity and strength.

This line combines refined design, high-quality materials, and advanced comfort, offering a luxurious and rejuvenating bathing experience.

#### FEDERICA'S CAREER

Federica Biasi started her professional career in Italy, followed by 2 years in Amsterdam where she explored nordic design, learned to identify emerging trends and developed her own style focusing on formal simplicity with an always clean aesthetic approach. In 2015 she returned to Milan where she set up Federica Biasi Studio.

Her style is easily recognizable by a formal but detailed simplicity with an always clean aesthetic approach. She combines manual work and tradition in order to reach, when is possible sustainable solutions.

Appointed by master Andrea Branzi, in 2018 she was awarded as one of the 6 Italian Rising Talents at Maison & Objet fair in Paris. In 2020, Federica Biasi presented the Lume collection for Nespresso, and also won the EDIDA – ELLE DECOR INTERNATIONAL DESIGN AWARDS 2021 as Young Talent of the Year. She has also recently won IF Design Award 2022 and Kyoto Global Design Awards 2023.



# NEW YORK LUXE

## BATHROOM DESIGN



*Emma Jones*

INTERIOR DESIGNER



### Emma shares her ideal bathroom style

I chose this picture as my style inspiration because it captures the essence of New York Luxe. A bold, moody and high-end aesthetic that feels both dramatic and refined. The rich black marble with striking gold veining immediately evokes a sense of modern opulence, I've paired it with beautiful warm and beige travertines, which introduces warmth and neutral texture through the earthy terracotta tone and softness of beige colour, together, they create a luxurious and grounded atmosphere that feels contemporary yet timeless.

# Nature Positive+

## James Hardie is Certified Global GreenTag.

### What is Global GreenTag?

Before we explain what Global GreenTag is, first we might start with why a Global Certification of Green was needed.

Greenwash has ruled in the eco market. Any brand can claim to be an environmental saviour with a few 'natural' ingredients and some sharp marketing. Buyers don't know who to trust. Fake products in green packaging take sales away from genuinely deserving brands. The planet continues to be exploited in the name of inauthentic green design, everyone suffers.

GreenTag was created as a tool to cut through the greenwash and empower professionals and consumers alike to confidently choose products that have been made in the most planet-friendly way possible. GreenTag takes the doubt out of buying. And because buyers know they can trust the label, genuine green products earn the greatest reward of all, trust.

James Hardie have recently been rewarded with Global GreenTag Certification Level A in manufacturing.











# Secura Flooring

A versatile solution for indoor and outdoor structural flooring.

Hardie™ Secura™ Flooring range now offers a dual application solution for both interior and exterior applications, optimising efficiencies in stock keeping and installation.

Hardie™ Secura™ Flooring is a durable yet lightweight structural flooring that can be installed over timber or steel floor joists and can contribute to a 7-star rating. Hardie™ Secura™ Flooring is the ideal wet area flooring solution. It's resistant to moisture damage and features a surface sealer to help reduce moisture penetration and means water beads on the surface rather than penetrates.

The moisture-resistant surface sealer removes the need for full floor waterproofing outside enclosed shower areas. Also, unlike

plywood or particle board, you can tile directly onto it without the need for underlay, helping to avoid noticeable height differences from one floor finish to the next. Hardie™ Secura™ Flooring is quick and easy to install with its tongue and groove joint, which also eliminates the need for timber trimmers.

Unlike some other flooring substrates, Hardie™ Secura™ Flooring can be gun nailed to the floor without pre-drilling and screwing holes, helping save time in installation.





## SECURA™ KEY FEATURES

- Can contribute to 7 stars without the need to modify the flooring structure on upper storeys and can contribute an improved star-rating when used on upper storeys compared to particle board
- Can be exposed to the elements for up to 3 months without warping or twisting
- Resistant to rot & damage from termites
- Can be gun-nailed
- Can be used as a lightweight intertenancy floor
- 25-year product warranty
- Australian Made



More information about  
Secura Flooring can be found at  
[www.jameshardie.com.au](http://www.jameshardie.com.au)





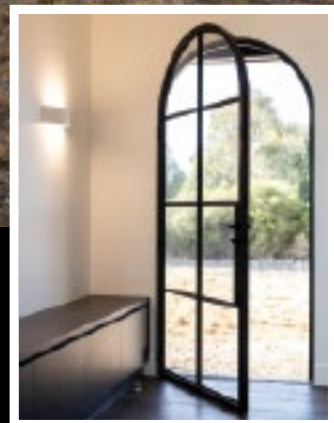
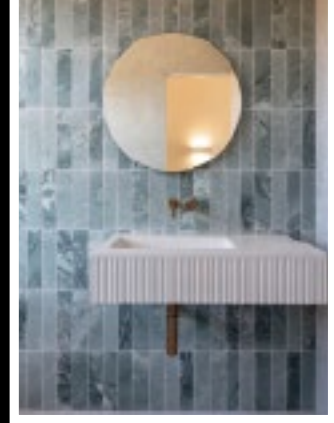
# Modern Gable House

**builder//** Spicer Building

**designer//** Belco Group

**location//** Inverleigh

In the quiet country town of Inverleigh, Spicer Building has delivered an architectural masterpiece that perfectly balances striking design, craftsmanship, and functionality.






---

**ABOVE & OPPOSITE PAGE//**

Stunning stone bath and minimal fixtures creates a peaceful bathing space.

**Recently recognised at the 2025 Master Builder's Victoria Regional Western Awards for Best Custom Home (\$800,000-\$1,000,000), this project exemplifies the company's dedication to excellence, innovation, and personalised service.**

Founded by Jason and Nadia Spicer in 2019, Spicer Building has quickly established itself as a respected family-run building company. Their hands-on approach ensures clients work directly with the owners while also drawing on a trusted network of skilled subcontractors. This collaborative model guarantees a seamless build experience and a home of uncompromising quality.

Set on an acreage block, the award-winning 323 sqm home is a modern gable design that makes a bold first impression. Two soaring cathedral ceilings are clad in Weathertex Woodsman groove boards, creating the dramatic charred timber aesthetic the clients envisioned. This texture is beautifully offset by Little Hampton Tuscany brickwork, which continues inside the home for a seamless architectural connection.

Entry into the home is defined by bespoke steel-framed arched doors, providing both grandeur and functionality. Inside, the design showcases high-end finishes including brushed copper tapware, marble benchtops, and dark cabinetry, paired with an outdoor fireplace built from the same Tuscany bricks featured on the façade. Vaulted ceilings reaching up to five metres enhance the sense of space and light, while thoughtful orientation ensures northern sunlight floods the main living areas.

The block of land was north facing with a very wide frontage, the owners were after a modern gable style home. The design was thoughtfully designed in collaboration with Belco Group to maximise the block's wide frontage planned so the home would flow across the width of the block and ensure all main living areas would receive maximum northern sunlight. The home also has a flowing connection between indoors and out. With multiple access points and a rear driveway, the design also anticipates the client's future plans for a pool and tennis court. Every detail reflects a balance between functionality, aesthetics, and long-term vision.





---

## PROJECT DETAILS

### Builder//

Spicer Building

### Designer//

Belco Group

### Location//

Inverleigh

### House Size//

323 sqm

## FEATURED PRODUCTS

### Exterior Facade//

Weatherx Woodsman Groove Boards 75mm

### Exterior Facade//

Hampton Tuscany brickwork.

### Bathroom//

Basin wall spout and mixer, towel rails and floor mounted bath mixer all finished in brushed copper.

---

## BRANDS FEATURED



## BUSINESSES FEATURED

**SPICER**  
BUILDING



Construction quality was paramount throughout the build, with rigorous attention to detail at every stage. Specialist support was sought to ensure correct installation of cladding systems, while a clear schedule gave trades the opportunity to deliver their best workmanship. Combined with the clients' strong design vision, this process resulted in a home that exceeded expectations.

Sustainability was also central to the design. Energy-efficient elements include Weatherx

eco-friendly cladding, double-glazed windows and skylights, passive solar orientation, and Colorbond roofing. Together, these choices ensured the home not only achieved but surpassed its energy rating requirements.

Exquisite both inside and out, this Inverleigh residence is a testament to Spicer Building's skill and dedication. With its bold gable form, luxurious finishes, and sustainable design, it stands as an inspiring example of modern country living. ♦

# The Quiet Power of Comfort in Learning Spaces

When we think about education, it's easy to focus on curriculum, technology, and teaching methods. Yet the very fabric of the building, the temperature of a classroom, the clarity of a teacher's voice, the freshness of the air, shapes the experience just as profoundly.

Architects and designers are increasingly turning their attention to the subtle but vital role of the built environment in learning outcomes. Research across Australia and internationally has revealed clear connections: thermal comfort, indoor air quality, and acoustics can directly affect concentration, fatigue, and even long-term academic performance.

In Sydney, a field study of secondary schools showed that rising classroom temperatures and elevated CO levels heightened feelings of fatigue and reduced students' ability to concentrate. Other research confirms that children often prefer cooler indoor conditions than adults, challenging assumptions about thermal norms. Meanwhile, studies into classroom acoustics suggest that when speech is unclear—whether due to reverberation, background chatter, or inadequate sound insulation—students lose focus, miss key concepts, and fall behind. Teachers, too, suffer when noise forces them to raise their voices daily, impacting health and wellbeing.

Beyond comfort, there is also the question of safety and sustainability. Indoor air quality, condensation management, and fire-resistant materials are not only performance considerations but markers of care for the wellbeing of both students and educators.

And as design culture continues to embrace sustainability, recycled and low-VOC materials add another layer of value, contributing to Green Star and WELL ratings.

This growing body of knowledge has encouraged leading manufacturers, such as Fletcher insulation, to collaborate closely with architects and specifiers. Their role is not just about supplying materials, but about sharing technical expertise that helps shape education facilities into environments where learning can truly flourish.

Whether insulation is applied within walls, beneath floors, across ceilings, or integrated with HVAC systems, the outcomes extend far beyond energy efficiency: quieter classrooms, more balanced temperatures, healthier air, and safer buildings.

The lesson is simple yet powerful. Just as great teaching requires thought and care, so too does the design of the spaces in which teaching takes place. By weaving principles of comfort, sustainability, and safety into the structure of our schools, universities, and colleges, we create buildings that don't just house learning—they elevate it.





### Building Envelope: External Walls

Pink® Partition and Sisalation® Vapawrap®  
Vapour Permeable Membranes



## Fletcher Insulation

Building Better, Together



Controlling Indoor Thermal  
Comfort & Air Quality



Minimising  
Unwanted Noise



Controlling Building  
Condensation



Protecting People and  
Buildings from Fire

### Fitout: Ceilings and Internal Partitions

Pink® Partition



### Fitout: Ceilings

Pink® Sonomatt Blanket



### Fitout: Between Floors and Underslab

Pink® Thermal Slab



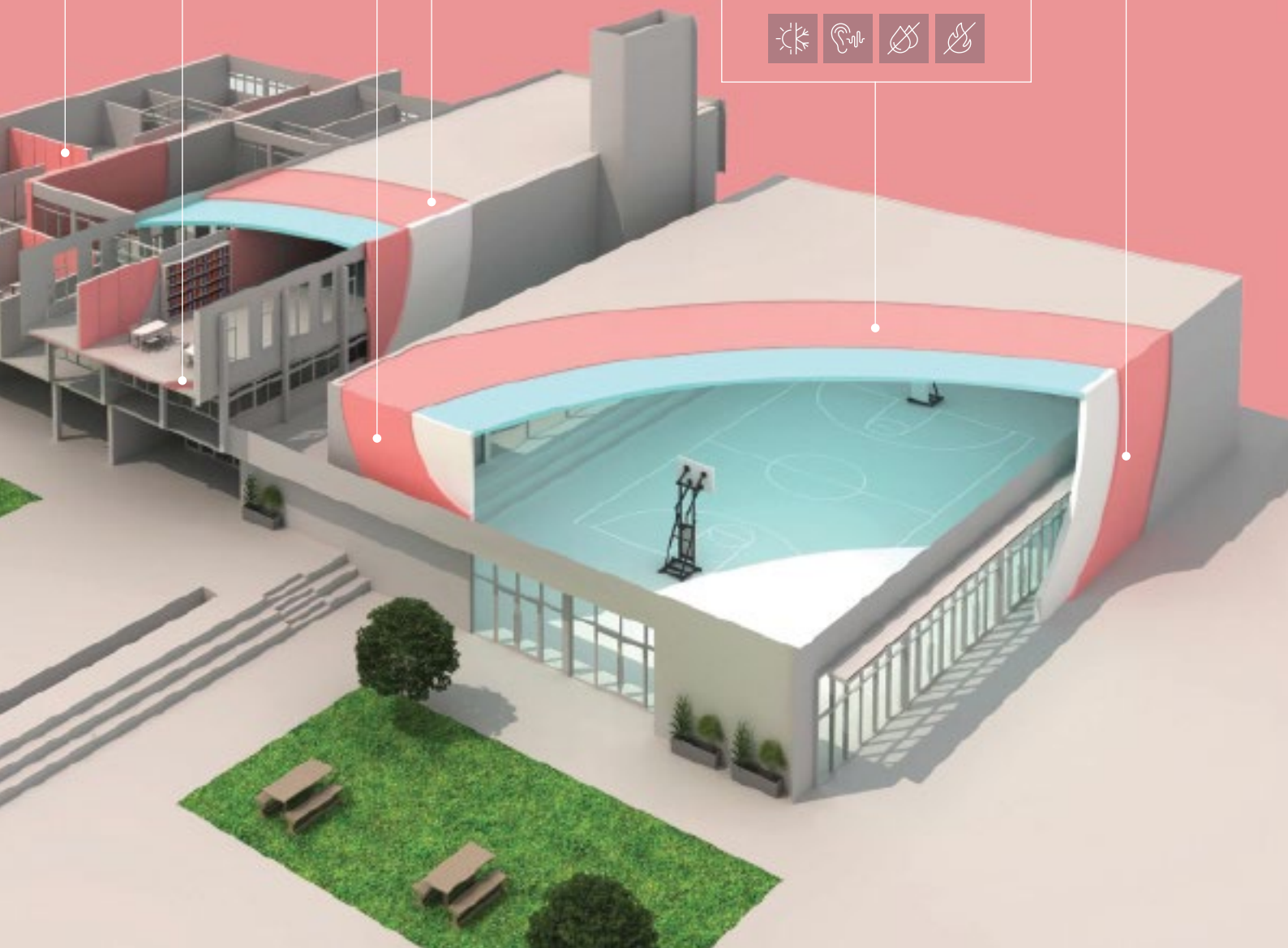
### Building Envelope: External Walls

Fi32 Semi Rigid or  
Fi48 Rigid BoardRazor®



### Building Envelope: Roofing

Permastop® Building Blanket  
with Roof Razor®



# ELEVATED MINIMAL

## KITCHEN DESIGN



*Alicia Flett*

INTERIOR DESIGNER



### Alicia shares her ideal kitchen style

This image beautifully embodies the Elevated Minimal style, which is why I've chosen it as my inspiration. The design seamlessly merges simplicity with sophistication, clean lines and a soft neutral palette are elevated by luxurious materials and refined detailing. The fluted stone island adds a sculptural quality, while the timber cabinetry and brass accents bring a sense of warmth and understated elegance. Every element is intentional, promoting calmness and order without feeling cold or sparse. It's a perfect balance between minimalism and richness, making the space feel both grounded and high-end.





# Floor to Ceiling, Inside to Out.

It's all at Walkers.



# Relaxed Sophistication

**Builder//** Hudson Ridge Builders **Photography//** Supreme Digital Media



Pairing Cemintel and Hebel for texture, tone and performance, results in a coastal masterpiece.

Award-winning Hudson Ridge Builders are known for their detail-driven approach, creating custom homes that prove your dream façade is possible with the right materials and vision.

With its coastal style façade, this home captures the essence of relaxed sophistication. For this project, Hudson paired two CSR products, Cemintel Territory Woodlands Lined cladding with Hebel PowerPanelXL, to create a timeless look that

blends clean lines with natural texture while also delivering thermal comfort, acoustic performance and lasting strength.

This beautifully designed home captures an objective many contemporary houses strive for but fall short of achieving. Every space inside is designed to feel open, calm, and connect effortlessly with the serene coastal surroundings.





---

#### PROJECT DETAILS

**Builder//** Hudson Ridge Builders

**Photography//** Supreme Digital Media

#### FEATURED PRODUCTS

**Exterior Facade//** Cemintel Territory Woodlands Lined,

**Exterior Facade//** Hebel PowerPanelXL

---

#### BRANDS FEATURED



CEMINTEL®



# MID CENTURY

## BATHROOM DESIGN



*Natasha Migliorelli*

INTERIOR DESIGNER



### Natasha shares her ideal bathroom style

This image perfectly captures the essence of Mid-Century style, which is why it stood out as my inspiration. Clean geometric lines of terracotta mosaic tiles, a warm timber finish, and a simple yet functional layout capture the essence of this timeless design era. The cabinetry's smooth surfaces and minimal detailing are complemented by carefully chosen accents that highlight craftsmanship over ornamentation. The balance of natural materials with purposeful design creates a look that feels both retro and enduringly modern, bringing an inviting, lived-in character that remains stylish decade after decade.







## Mirrors with features you'll actually use.

We believe that your daily routine should be both functional and beautiful. That's why our illuminated mirrors and shaving cabinets are a perfect blend of lighting, modern technology, and sleek design.

With features like demisters, magnifiers, colour variable LED lighting and bluetooth speakers, our products are both visually appealing and incredibly convenient. With just a simple touch, you can activate these functions and make your daily life a little more comfortable and hassle-free.



SHAPE

**REMER**  
remer.com.au

## For the love of building. Building with conscience.

For sustainability and the admiring looks. Improving not only the aesthetics, but the environment too.



Your Partner for Interior & Exterior Render  
Systems, Cladding & Construction Solutions.

03 9768 4900 | [www.stoaustralia.com.au](http://www.stoaustralia.com.au)

**sto**



Building with conscience.